



CASTLE VILLAGE

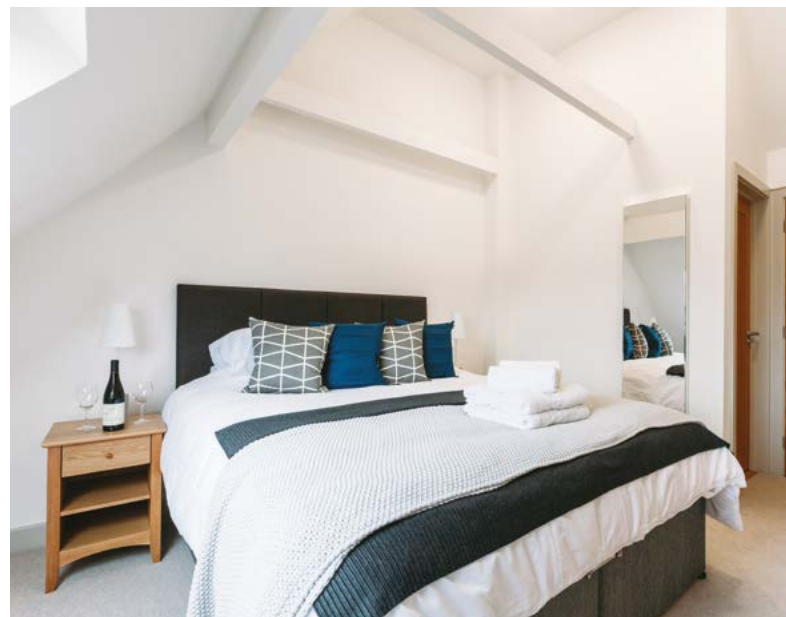
TREGENNA CASTLE, CORNWALL

Set in the grounds of the spectacular Tregenna Castle resort is this luxury development of 14 homes. The properties are undergoing complete modernisation and refurbishment and will include a range of two and three bed roomed properties. They are available with full residential status and the new homeowners can also take advantage of the leisure facilities and activities available at Tregenna Castle.

The complex is situated away from Tregenna Castle creating a quiet secluded position for residents. The gardens are communal and have been superbly maintained with a variety of plants and shrubs. There is an allocated parking space for the property.

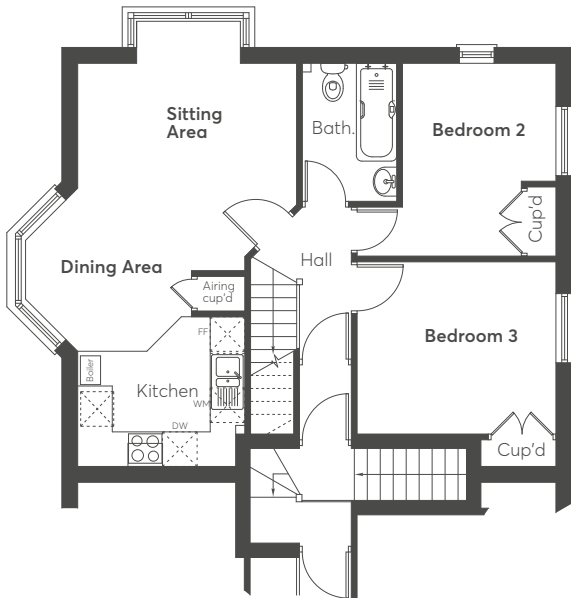
With full residential status the residents can live here throughout the whole year. The homes on the Castle Village development can also be let out and Tregenna Castle can help with the managing of these properties. Investors can take advantage of the Castle's extensive client database.

Tregenna Castle is a family-friendly destination with a wealth of facilities, overlooking the well renowned and picturesque seaside town of St Ives. Boasting a subtropical paradise and golden sandy beaches including the blue flag rated Porthmeor Beach and the beautiful Porthminster Beach. St Ives is a highly popular holiday resort.

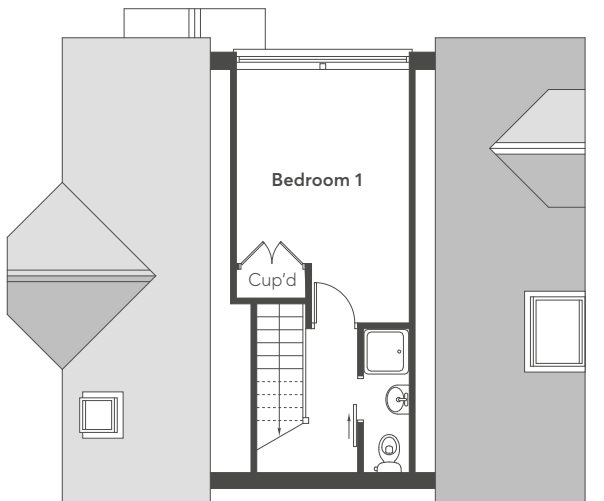


3 BEDROOM MAISONETTE APARTMENT

FIRST FLOOR

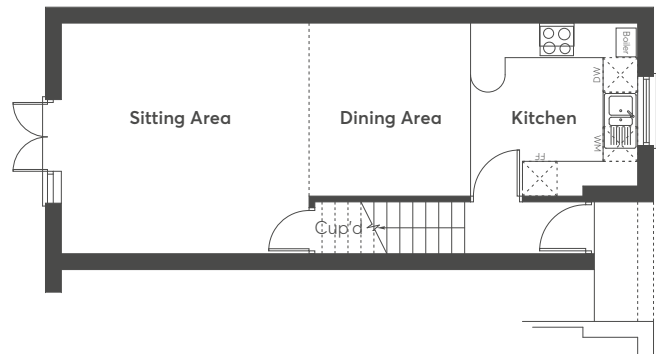


SECOND FLOOR



3 BEDROOM COTTAGE

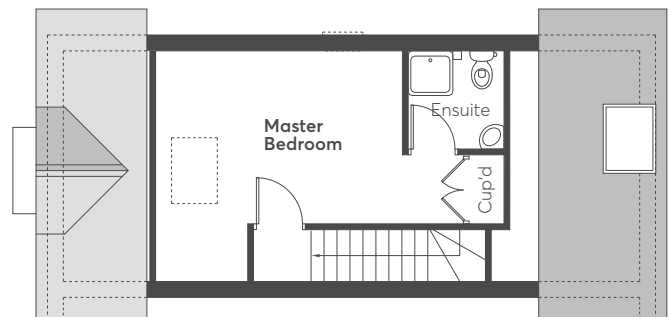
GROUND FLOOR



FIRST FLOOR



SECOND FLOOR





DIRECTIONS

BY ROAD

The A30 runs from Exeter to Penzance. At Lelant just west of Hayle take the A3074 to St. Ives. Immediately after Carbis Bay watch for the Tregenna Castle signs on the left hand side. The main entrance to the Estate is on the left.

BY RAIL

Regular Intercity Services to Penzance stop at St. Erth station, and from there a frequent local service runs along the 3 mile scenic branchline to St. Ives.

BY AIR

Regular Flights from Stansted to Newquay Airport operate with only 40 minutes flying time.



Please contact us now to arrange a site visit or request details.

Truro 01872 264120

truro@lewishaughtonwills.com

81 Lemon Street, Truro, Cornwall TR1 2PN

 The City Estate Agents

Lewis Haughton Wills

lewishaughtonwills.com